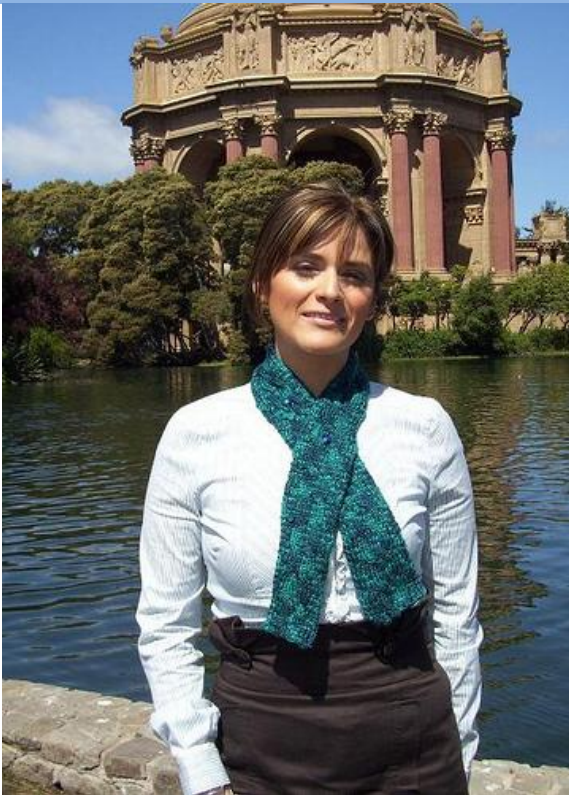


Palace of Fine Arts Scarfette



Created by Patty Thomas of Daisy Yarns of San Francisco for individual use (not to be copied or published without permission, www.daisyyarns.com), April-2009.

Materials: 1 Skein of Tilli Tomas 100% silk SIMPLY HEAVEN, Jade
1 Pair of **Size 7 Needles**, Cable Hook, Yarn Needle, 2 Buttons, Stitch Counter (to keep your rows on track)

Level: Advanced Beginner, requires ability to knit, purl, mini-cable aka C2F, cable 4 Front and do a double yarn over (followed by dropping one of the yarn over's on the wrong side).

Knitting Terms: P = Purl K = Knit YO 2 times = Yarn over twice

C2F = Cross 2 Front by skipping the 1st stitch on left needle and slip needle under second stitch and knit it without dropping. Then go to the 1st stitch and knit it and drop both stitches at the same time. Note: I have also seen this abbreviation as Cross 2 Left.

C4F = Cable 4 stitches in front, by slipping 2 stitches onto a cable hook and holding in front, then knitting the next 2 stitches from the left needle; then knitting the 2 stitches from the cable hook. This cause a twist that is seen much better in about 4 more rows ~ very beautiful.

BO Special = Bind Off Special variation method detailed at the end of this pattern

Set Up Rows

Cast on 21 Stitches using cable cast on method

Row A: P1, K1, P1, (K2), P1, K4, P1, K4, P1, (K2), P1, K1, P1 = 21 stitches

Row B: K1, P1, K1, (P2), K1, P4, K1, P4, K1, (P2), K1, P1, K1

Main Body

Row 1: P1, K1, P1, (C2F), P1, C4F, P1, C4F, P1, (C2F), P1, K1, P1

Row 2: K1, P1, K1, (P2), K1, P4, K1, P4, K1, (P2), K1, P1, K1

Row 3: P1, K1, P1, (K2), P1, K4, P1, K4, P1, (K2), P1, K1, P1

Row 4: K1, P1, K1, (P2), K1, P4, K1, P4, K1, (P2), K1, P1, K1

Row 5: P1, K1, P1, (C2F), P1, K4, P1, K4, P1, (C2F), P1, K1, P1

Row 6: K1, P1, K1, (P2), K1, P4, K1, P4, K1, (P2), K1, P1, K1

Row 7: P1, K1, P1, (K2), P1, K4, P1, K4, P1, (K2), P1, K1, P1

Row 8: K1, P1, K1, (P2), K1, P4, K1, P4, K1, (P2), K1, P1, K1

Repeat above Rows 1-8 for approximately 27 inches.

Front Side: Make a buttonhole by doing a double yarn over on the center purl stitch.

Back Side: Drop one of the yarn over's and knit the center KNIT stitch as one stitch. Continue knitting the above 8 Rows until full length is 39 inches.

Special Binding Off Instructions: STOP and read first!

A normal bind off starts with two knitted stitches on the right needle, then you pass the 1st stitch over the 2nd stitch. Afterwards, you would knit another stitch so that you bind off is stretchy (especially important for hats or sweaters, etc.)

This scarfette is NOT going to use the standard method mentioned but the below method:

Bind off by Slipping 2 stitches over to the right needle and pass the 1st stitch over the 2nd stitch, next slip one more stitch over and repeat.

The quandary is that you end with an open loop and the yarn at the other end.

Cut the yarn end with about 4" of yarn and weave in as normal with a yarn needle.

Cut another strand of 4" and using your yarn needle go through the loop and weave end both ends of the strand securely.

The end result is that both ends match perfectly! Sew on 2 buttons matching the buttonhole area so that you can button the scarfette close to the neck or just a little further down like a faux tie. The 2 buttons give a nice modern touch too.

Final Note: I have tried this on several women and generally these measurements work well for everyone. The button hole is built in so that it's barely visible if that. Just make sure you do put 2 buttons on to complete the look and visibility.

Happy and eco friendly knitting to everyone. The person you love deserves the best on them made by you.